

FSO 300-700 FSO-GR 300-700 HPI 300-700



TYPE

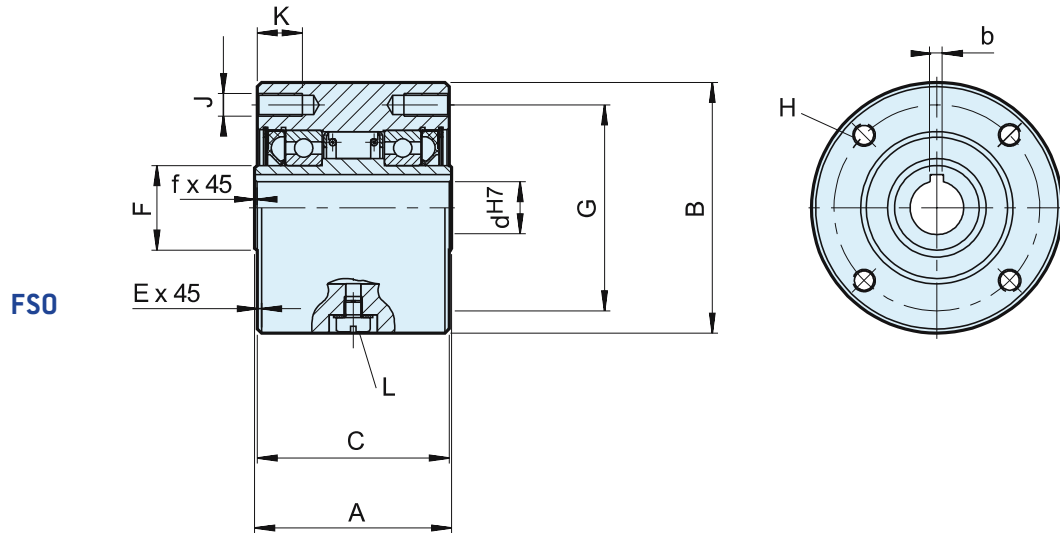


FSO..GR

Types FSO, FSO-GR, and HPI 300 to 700 are sprag type freewheels self-contained, sealed and bearing supported, using two ball bearings.

Units are delivered oil or grease lubricated according to the type. It is a Formsprag USA design with a »full sprag complement« that gives a very high torque for a

given diameter. Any overload is resisted by a sprag to sprag abutment, avoiding a sprag tilt over. Type FSO is oil lubricated and uses standard shaft lip seals. Type FSO-GR is grease lubricated and can be equipped with contact free labyrinth seals. Type HPI is specially designed for high speed indexing applications.

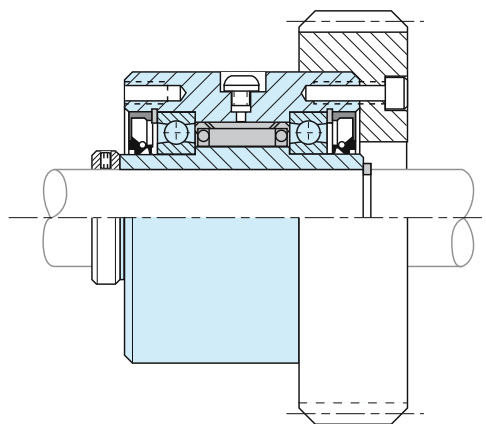


Type	Size	Overrunning speeds														Lubricant			Weight	Drag torque			
		FSO	FSO-GR	d ^{H7} -bxh	d ⁴⁾	A	B	C	E	F	G	H	J	K	L	f	FSO	FSO..GR			HPI	T _R	
		T _{KN} ¹⁾ [Nm]	n _{max} ²⁾ [min ⁻¹]	n _{max} ³⁾ [min ⁻¹]		min-max		-0.05															
FSO FSO-GR HPI	300	379	3000/900	3600/900	15-5x5	12... 19	63.50	76.20	60.45	1.6	28.58	66.67	4	M8	13	M6	0.8	7	10	14	1.6	18	
	400	407	2800/850	3600/850	18-6x6	12... 22	69.85	88.90	68.07	1.6	30	73	4	M8	13	M6	0.8	10	20	20	2.7	27	
	500	1621	2500/800	3000/800	30-8x7	19... 33	88.90	107.95	85.73	1.6	45	92	4	M8	16	M6	1.5	22	35	35	4.8	31	
	600	3105	2200/750	2400/750	45-14x9	24... 57	95.25	136.525	92.2	1.6	63.5	120.6	6	M8	16	M6	1.6	52	84	84	8.6	62	
						40-12x8																	
						50-14x6																	
					50-14x9																		
	700	6900	1600/450	2000/450	60-18x11	48... 82	127.00	180.975	123.85	1.6	90	158.75	8*	M10*	20	M6	1.6	168	280	280	19	156	
					65-18x11																		
					70-20x12						101.6 ⁵⁾												

NOTES

- 1) $T_{max} = 2 \times T_{KN}$
» Refer to Selection page 10 to 13
 - 2) Inner race/outer raceg
 - 3) Inner race/outer race labyrinth seal
 - 4) Inch bore available on request
 - 5) Only for oversize bore
Size 600 > 50 mm
Size 700 > 75 mm
 - *) 6 holes equally spaced at 60° plus
2 extra-holes at 180°
- » Refer to mounting and maintenance instructions
page 16 to 19

EMOUNTING EXAMPLE



PRECISION TRANSMATIC DEVICES PVT. LTD.

B-48, M.I.D.C., Satara - 415 004. (India)

Tel.: +91 (2162) 244454, 245354

EMAIL : sales@ptdin.com, WEBSITE : www.precisionfreewheel.com